

Data sheet light Citygrid Zhaga with Sensor MKII



P/N D21017

The data sheet light contains limited information on the product. See the full data sheet for more information.

ELECTRICAL CHARACTERISTICS			
Name	Value	Unit	Condition
Universal input voltage	24	V _{dc}	± 10% (typically powered by LED driver)
Power consumption	< 0,5	W	Always active, no sleep mode

INTERFACES	
Name	Value
DALI-2	Certified. Parts 101 and 103.
D4i	Certified as a Type D device. The controller is able to read the D4i memory banks from control gear.
Zhaga Connector	Zhaga Book 18

WIRELESS COMMUNICATION			
Specification item	Value	Unit	Condition
Gateway ratio	1:250	Control unit	Citygrid Gateway MKII P/N D22006/D22007.
Max units per site*	500	Control units	
Frequency Range	868,3 / 918,0	MHz	The frequency is set when running the Producer App to match European / Australian regulation.
Recommended distance between units	<50	m	Theoretical communication distance.
Maximum Range**	200	m	

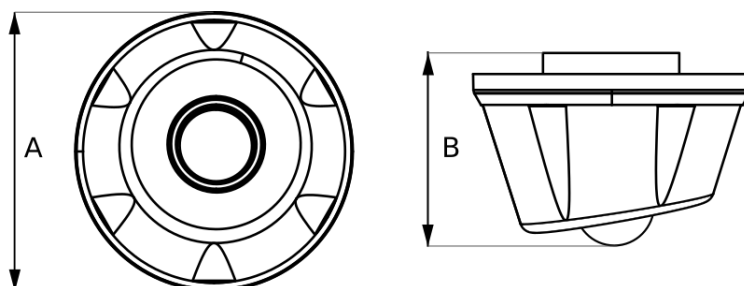
*Adjacent sites can communicate motion events.

** Maximum range under ideal conditions such as RF matching, line of sight, maximum power. Actual results may vary depending on the customer's design.

PROTECTION			
Specification item	Value	Unit	Condition
Required external fuse	<1	A	
IP rating	IP66		
IK rating	IK09		Top and side impact, excluding sensor lens.

TEMPERATURE & HUMIDITY			
Type	Value	Unit	Condition
Operational temperature	-30 to +60	°C	Ambient
Storage temperature	-40 to +80	°C	Ambient
Relative humidity	10 to 90	%	Non condensing. For use up to 2000m above sea level.

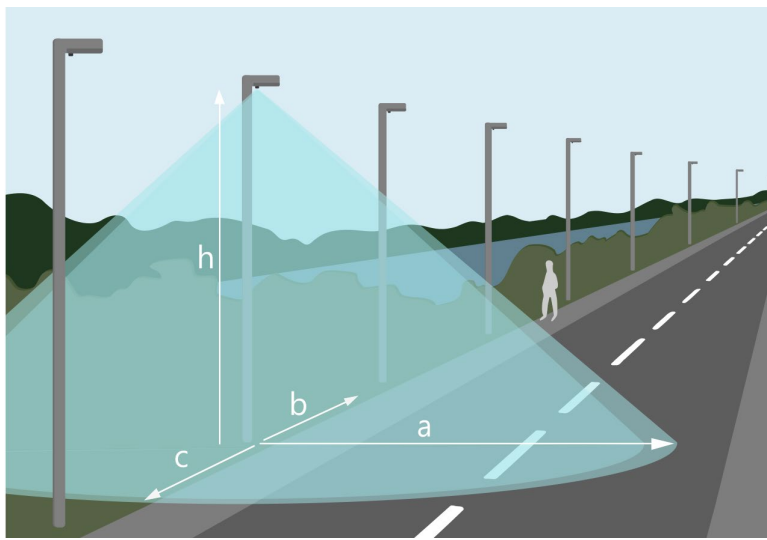
DIMENSIONS & WEIGHT			
Item	Value	Unit	Comment
A	80	mm	Diameter
B	52	mm	Height
Weight	0,070	kg	



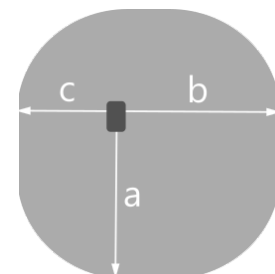
MOTION DETECTION			
Details	Value	Unit	Condition
Detection technology	PIR		Patent pending Analog detection algorithm
Recommended installation height	4 to 8	m	

DETECTION AREA			
Height h	Length a and b	Length c	Unit
4	6,0	4,2	m
5	7,5	5,3	m
6	8,0	6,3	m
7	8,0*	7,1	m
8	7,1*	7,1*	m

*The maximum detection range from the sensor is 10 metres. When the sensor is mounted higher than 6 metres the detection area at ground level shrinks slightly due to the sensor detection range. In those cases the detection lengths are measured 1 metre above the ground instead of at ground level.



Detection area



Top-down view of detection area



CAUTION

- Avoid touching live parts.
- Do not use the product with damaged housing or connectors.
- Do not service when the mains voltage is connected. This includes connecting or disconnecting the LED driver.
- The product should be installed by a trained or qualified person.

